

## ► Features

- Illuminated LED integrated
- Through-in and surface mount mount
- 500,000 long-life cycles
- Various single and bi-color LED optional
- Custom legends is available



## ► Applications

Panel control that requires tactile switch with illumination integrated.

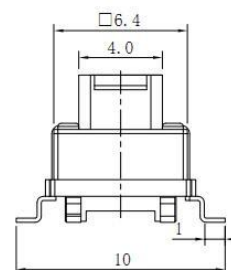
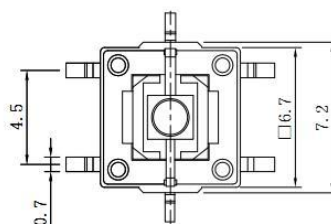
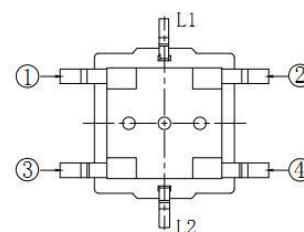
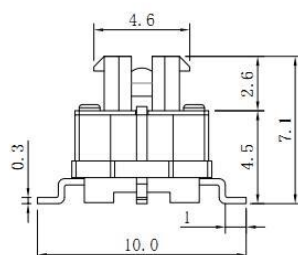
Typical for applications in pro audio&video, industrial, medical, security device, communication

## ► Specification

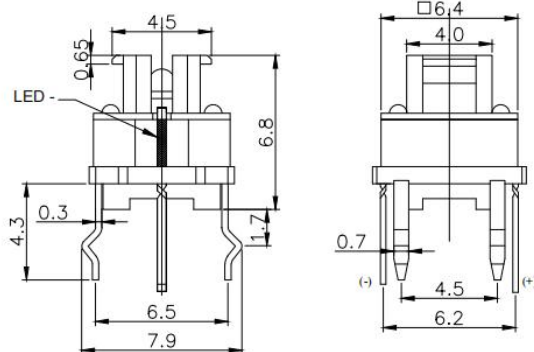
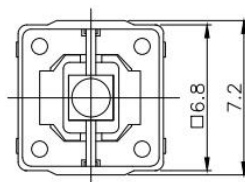
MPN	TS16 series
Power Rating	12 VDC at 50mA
Insulation Resistance	100MΩ
Dielectrical Strength	250VAC for 1-minute
Operating Force	160gf/250gf
Travel	0.25+/-0.1mm
Function	Momentary

## ► Dimension

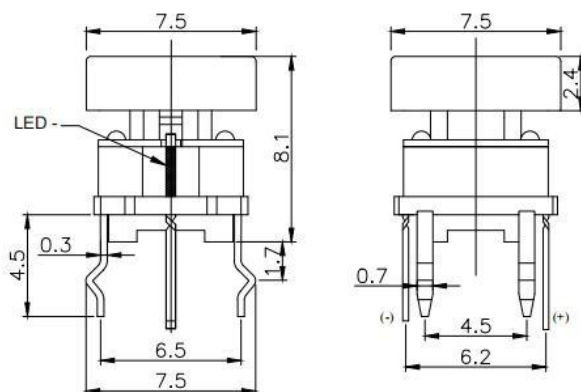
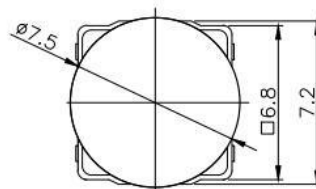
### TS16-0000WA



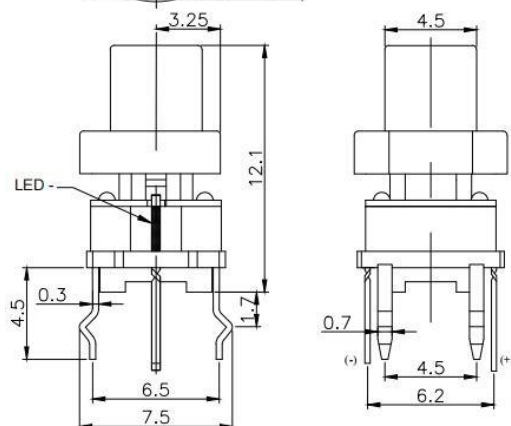
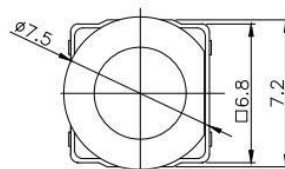
**TS16-0000R**



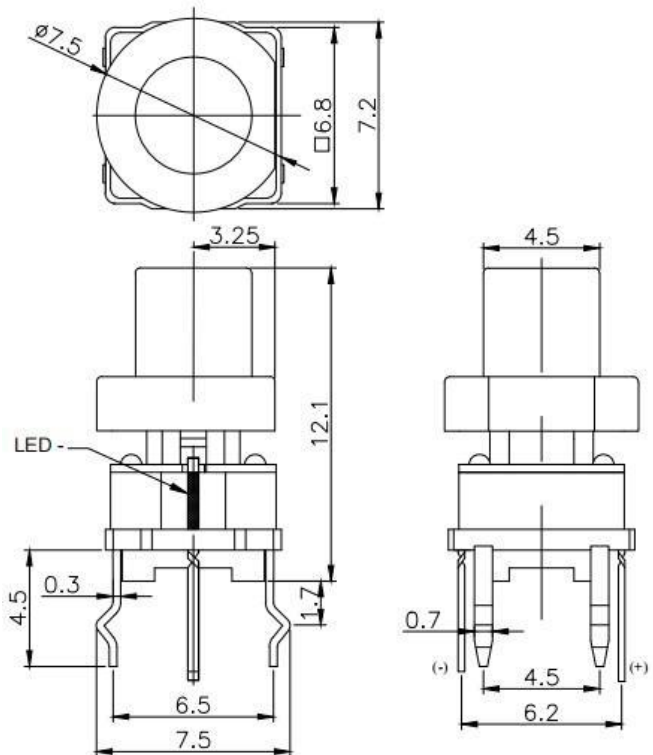
**TS16-0023AR1**



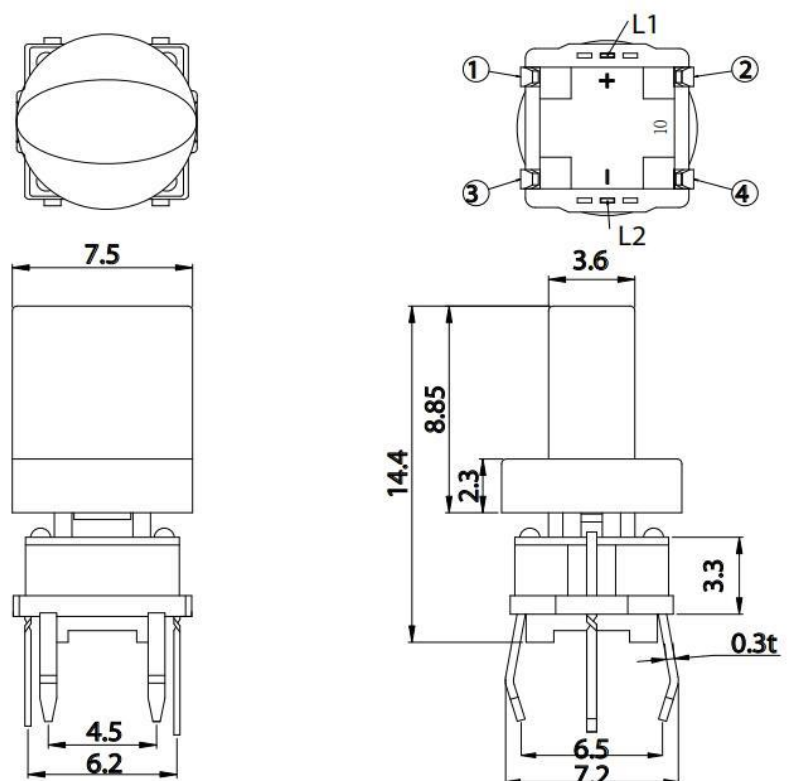
**TS16-00EWRG**



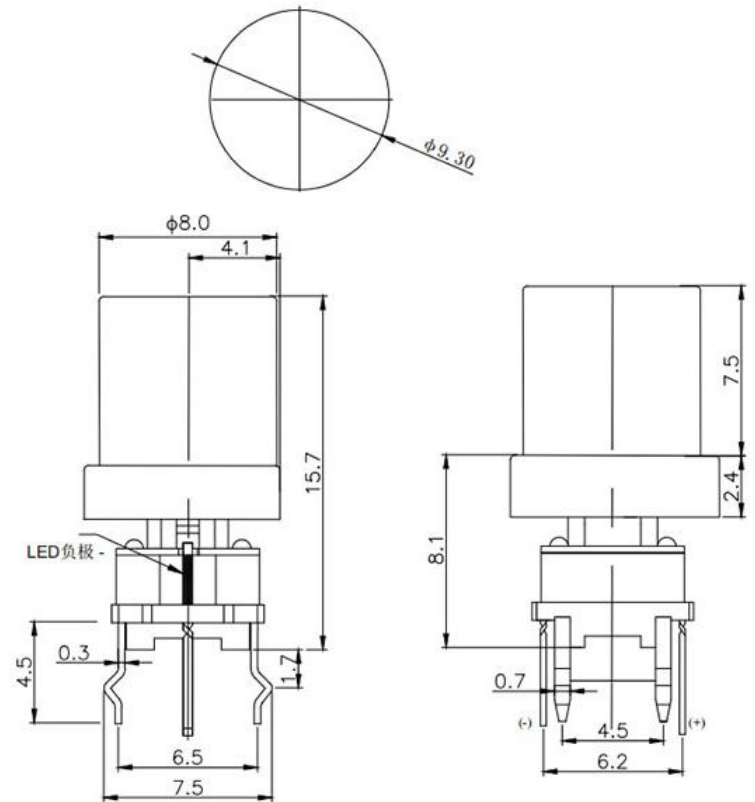
**TS16-00EARG1**



**TS16-0065RR**



**TS16-0055RR**



**TS16-00EWRA**

